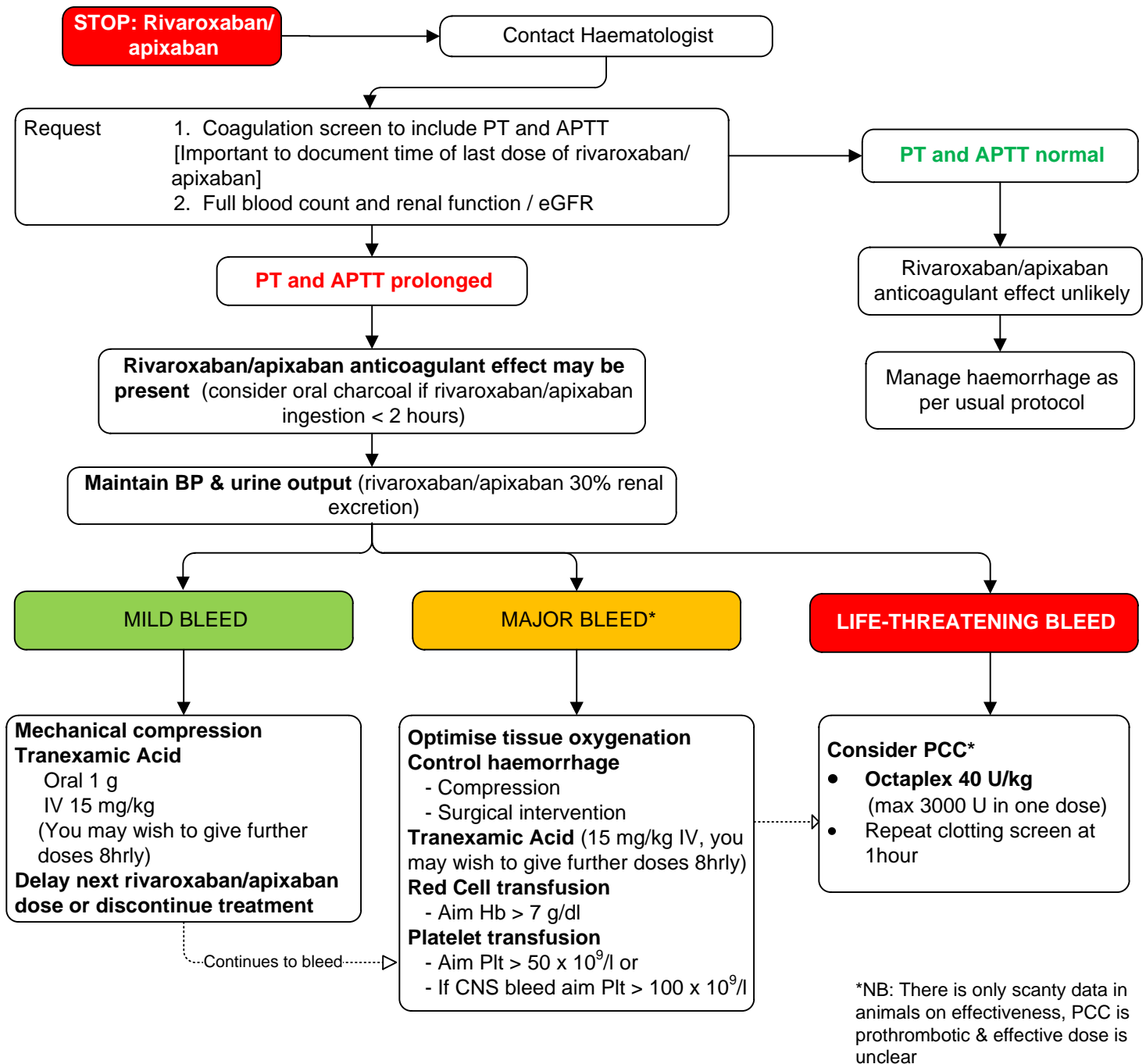


PATIENT RECEIVING RIVAROXABAN/APIXABAN THERAPY: HAEMORRHAGE PROTOCOL



***Major bleed:** Symptomatic bleeding in a critical area or organ, such as intracranial, intraspinal, intraocular, retroperitoneal, intra-articular, pericardial or intramuscular with compartment syndrome (Schulman et al J Thromb Haemost 2010; 3:692-694)