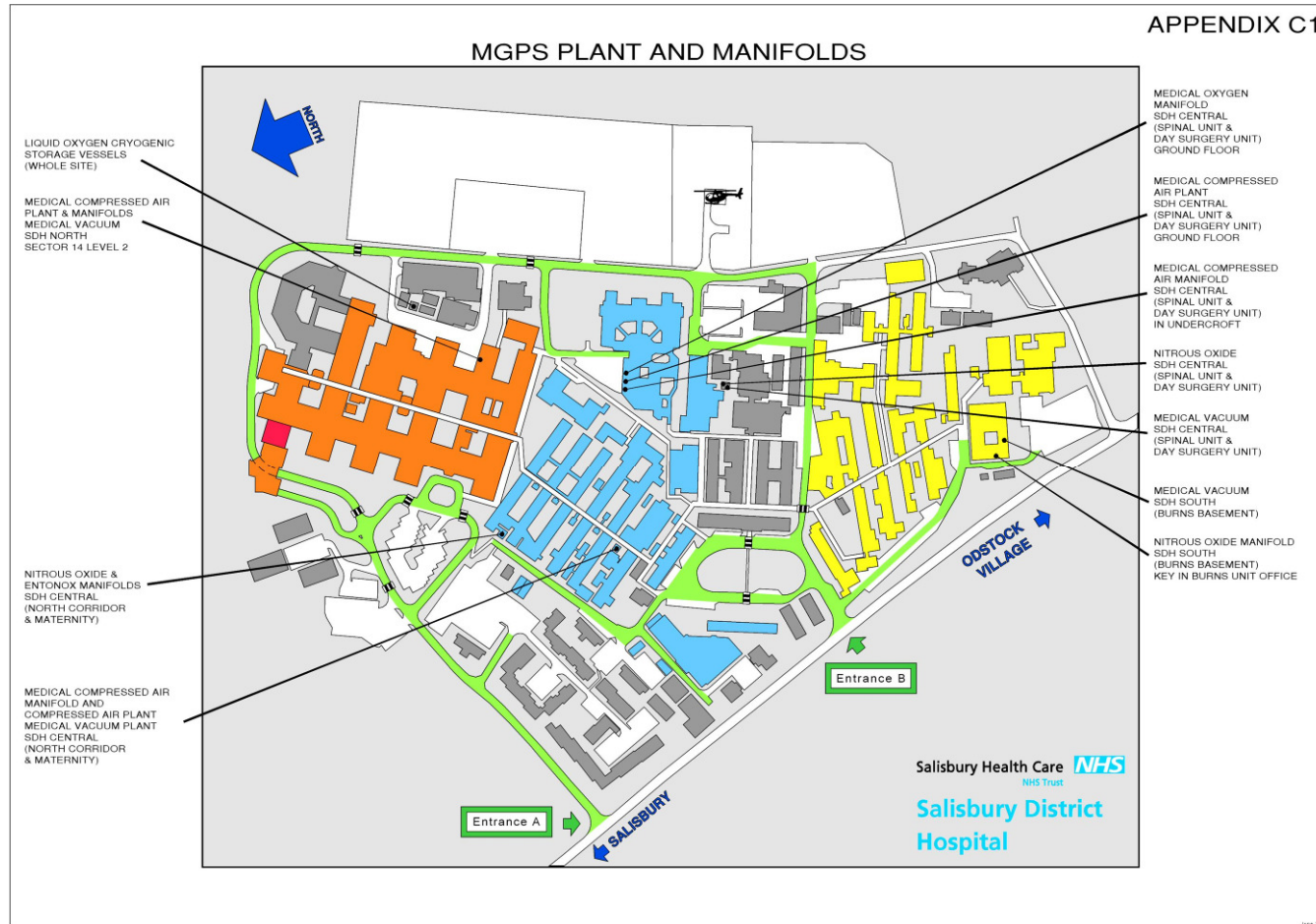


Appendix C

Site plans, manifold and pipeline schematics, and manifold photographs

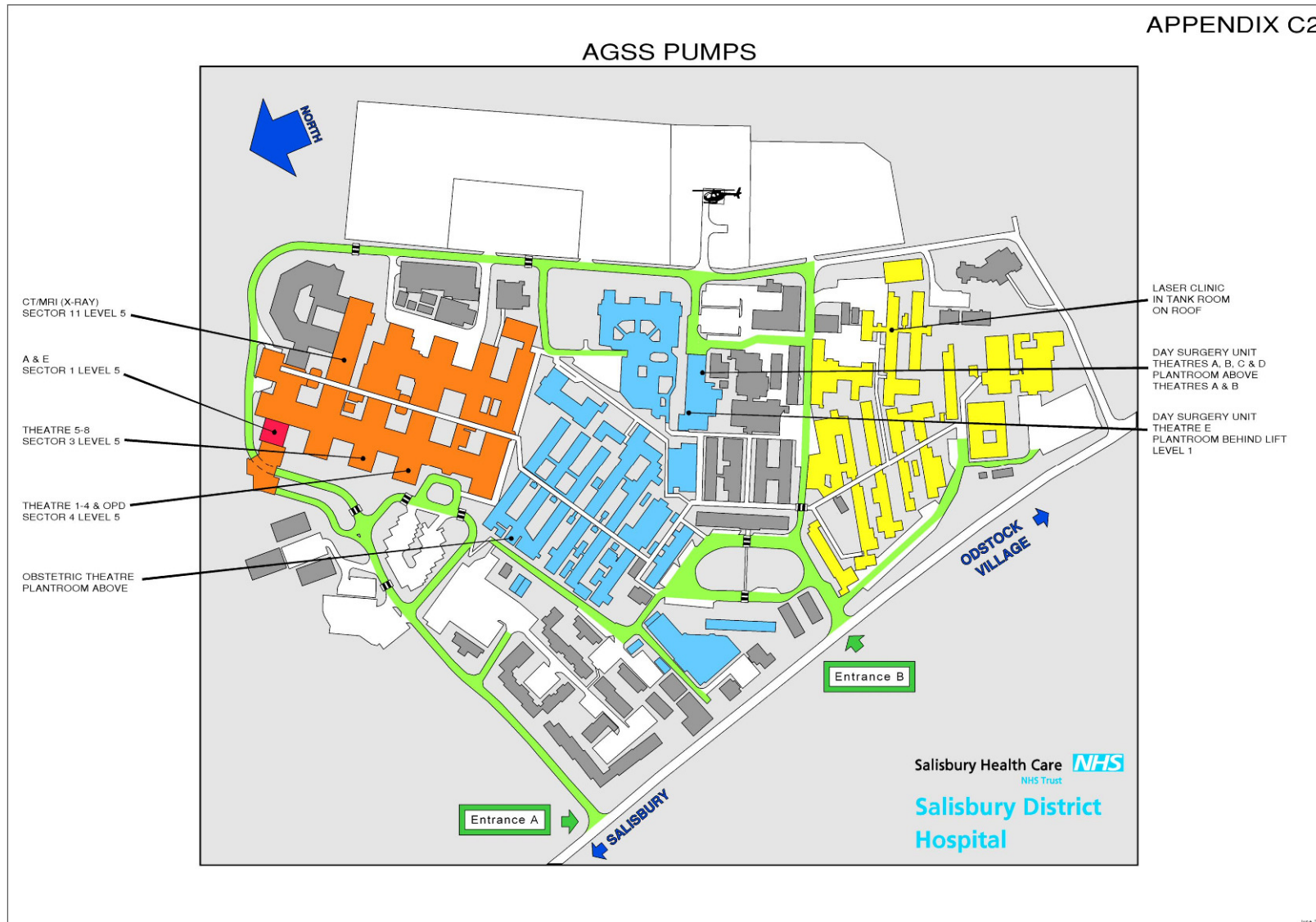
The site plans show the locations of medical gas plant, manifolds, and anaesthetic gas scavenging systems, pressure reducing sets and schematic manifold and pipeline drawings.

C.1 MGPS PLANT AND MANIFOLDS



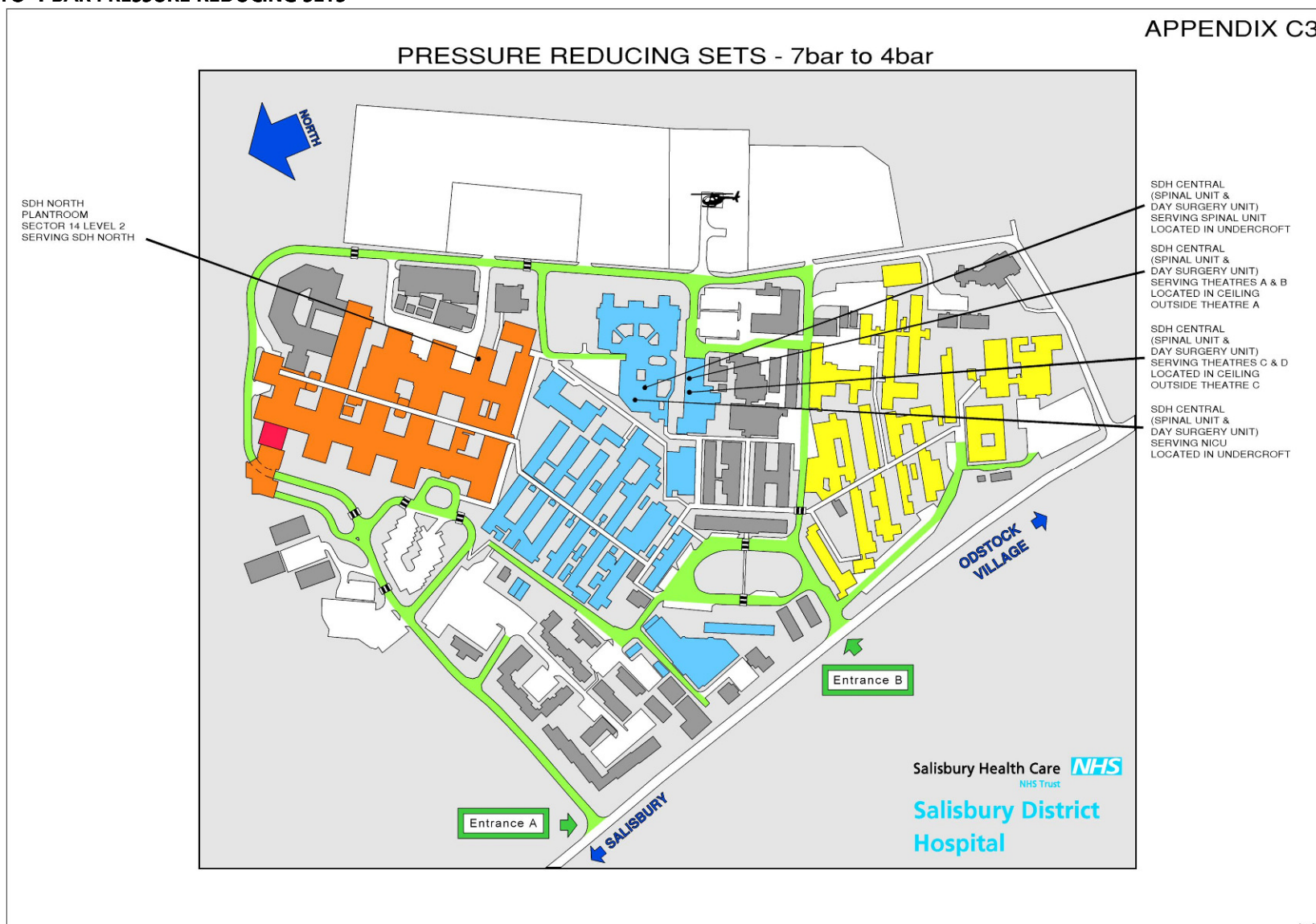
C.2 AGSS PLANT

APPENDIX C2

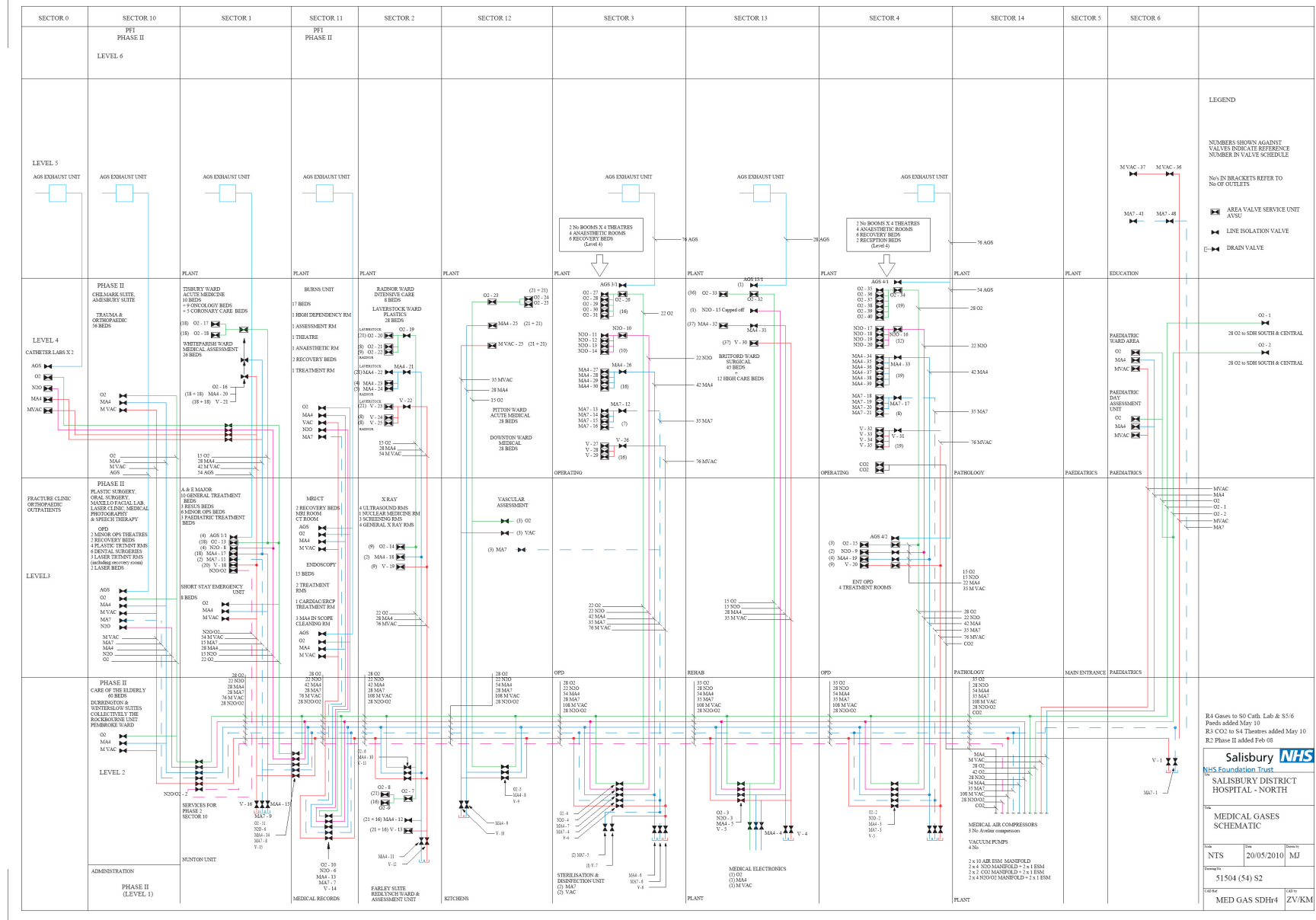


C.3 7 BAR TO 4 BAR PRESSURE REDUCING SETS

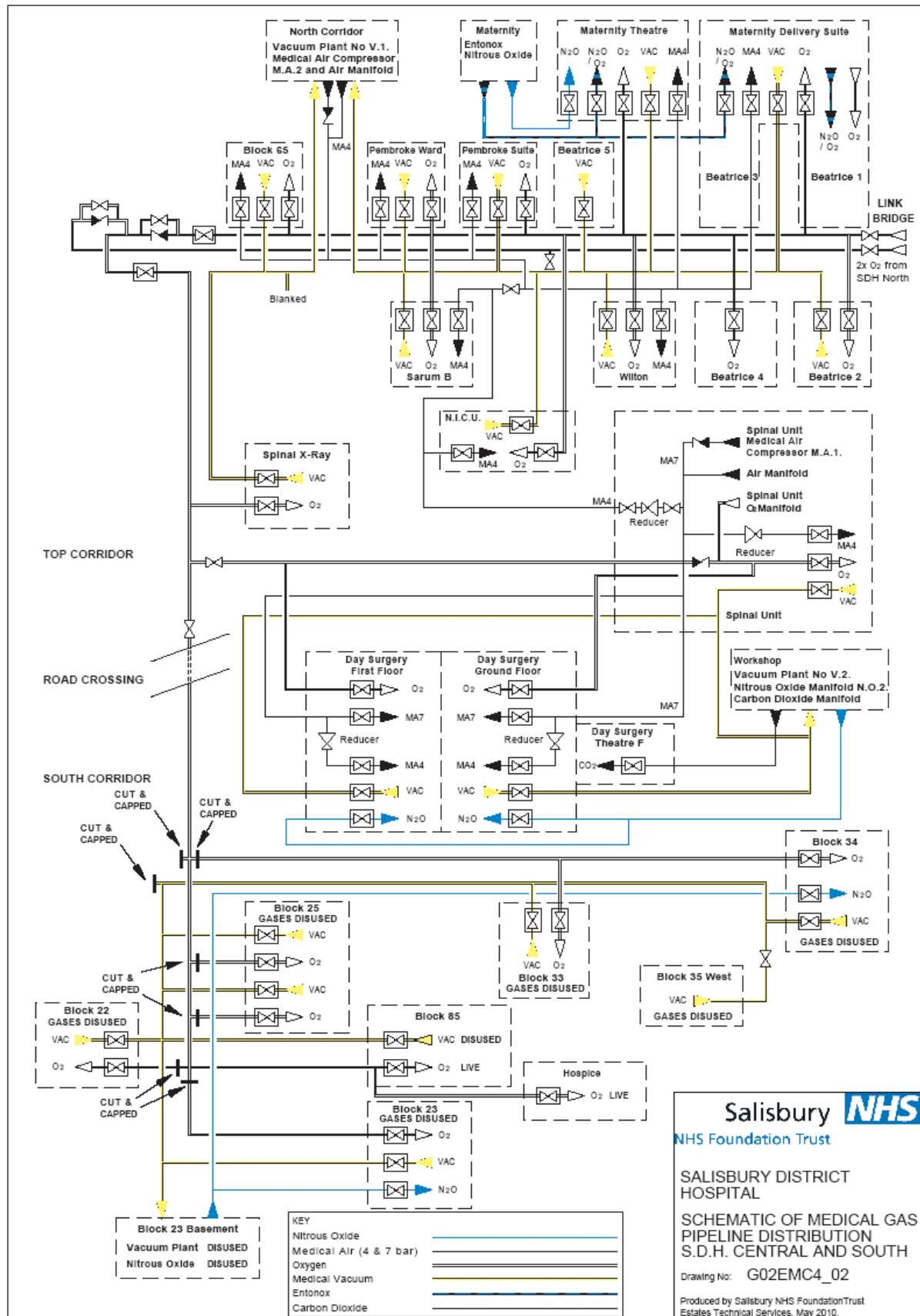
APPENDIX C3



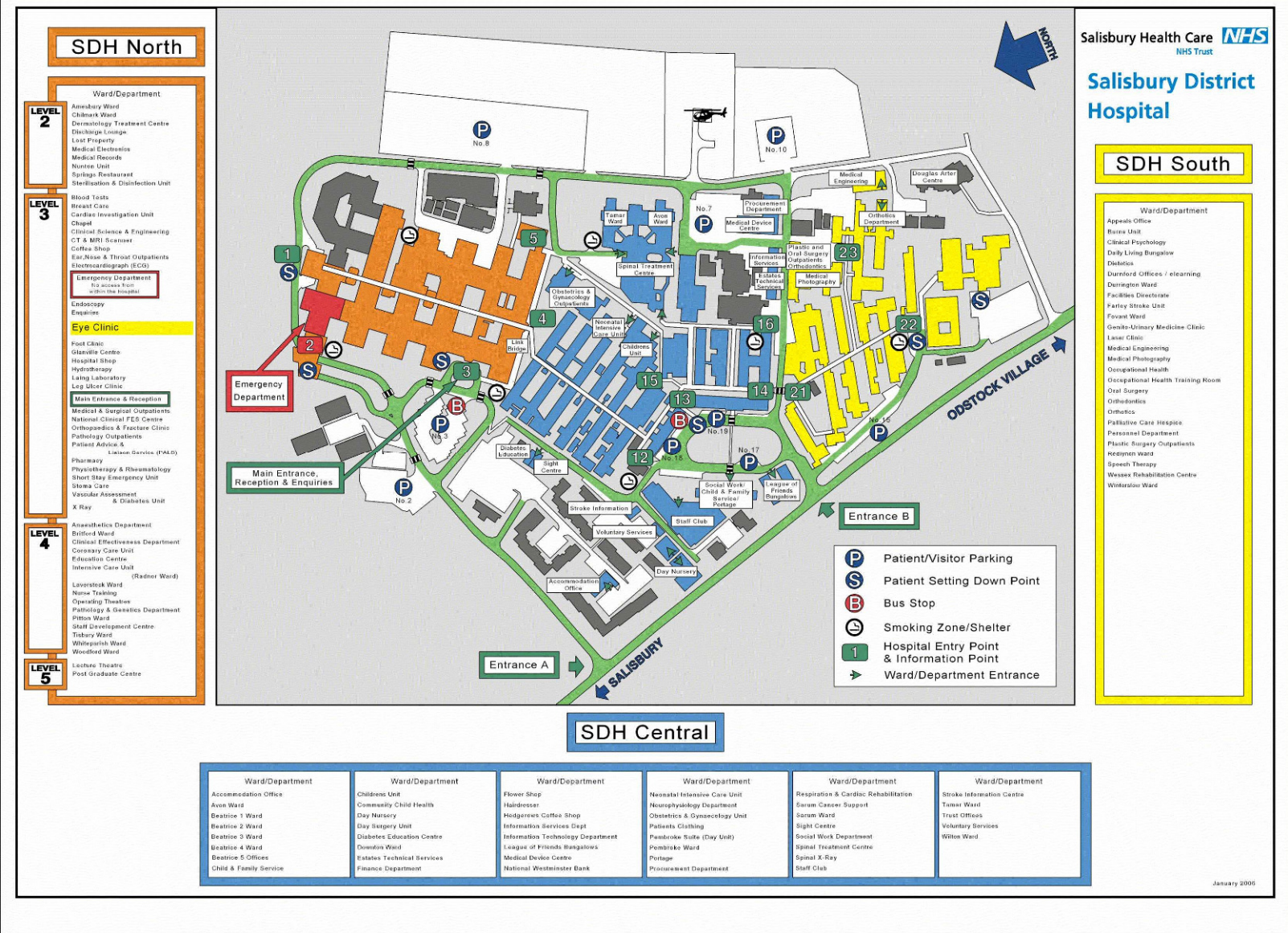
C.4 SCHEMATIC PIPELINE DRAWING SDH NORTH



C.5 SCHEMATIC PIPELINE DRAWING SDH CENTRAL AND SDH SOUTH

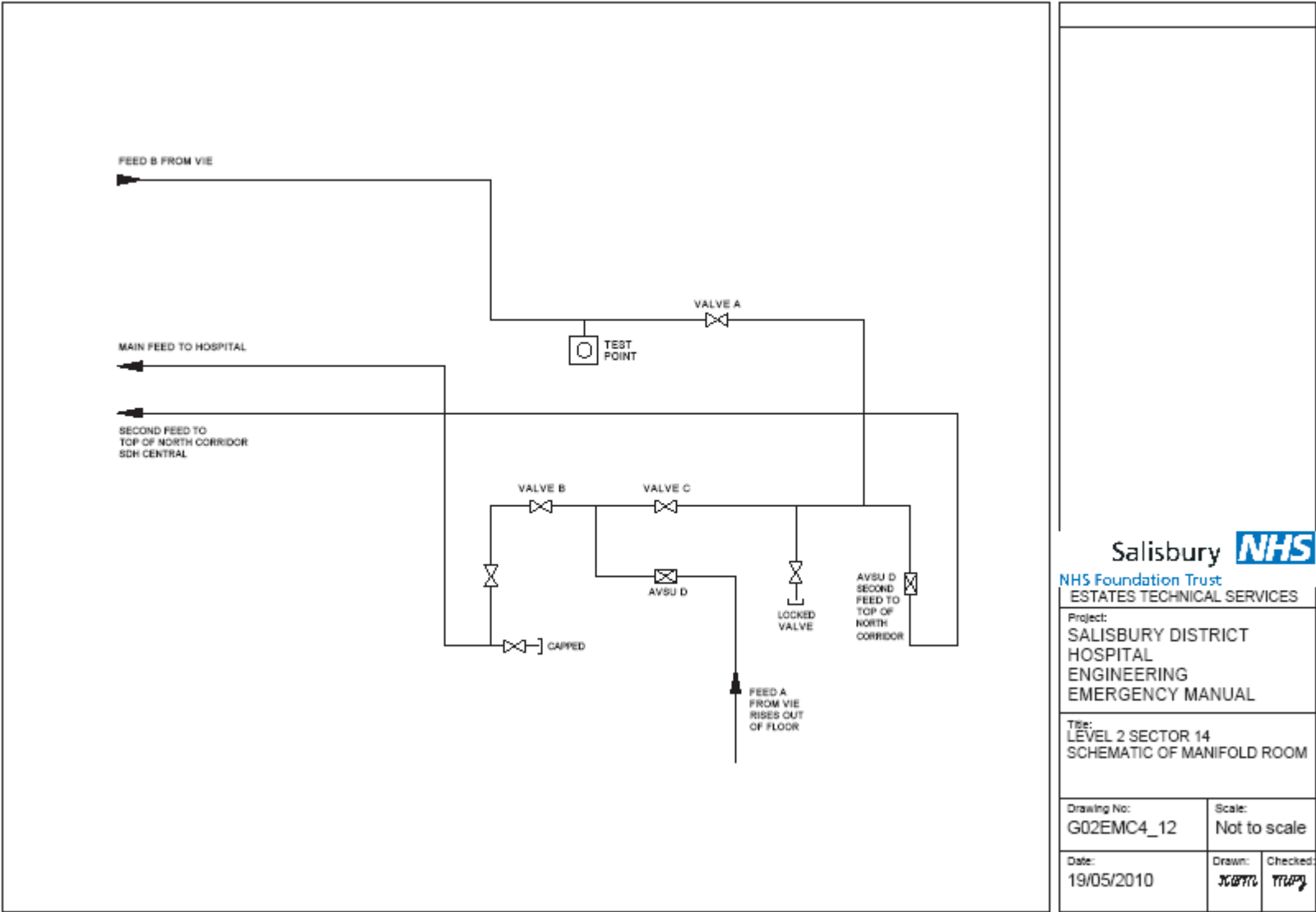


C.6 SITE MAP SHOWING SDH NORTH, SDH CENTRAL AND SDH SOUTH

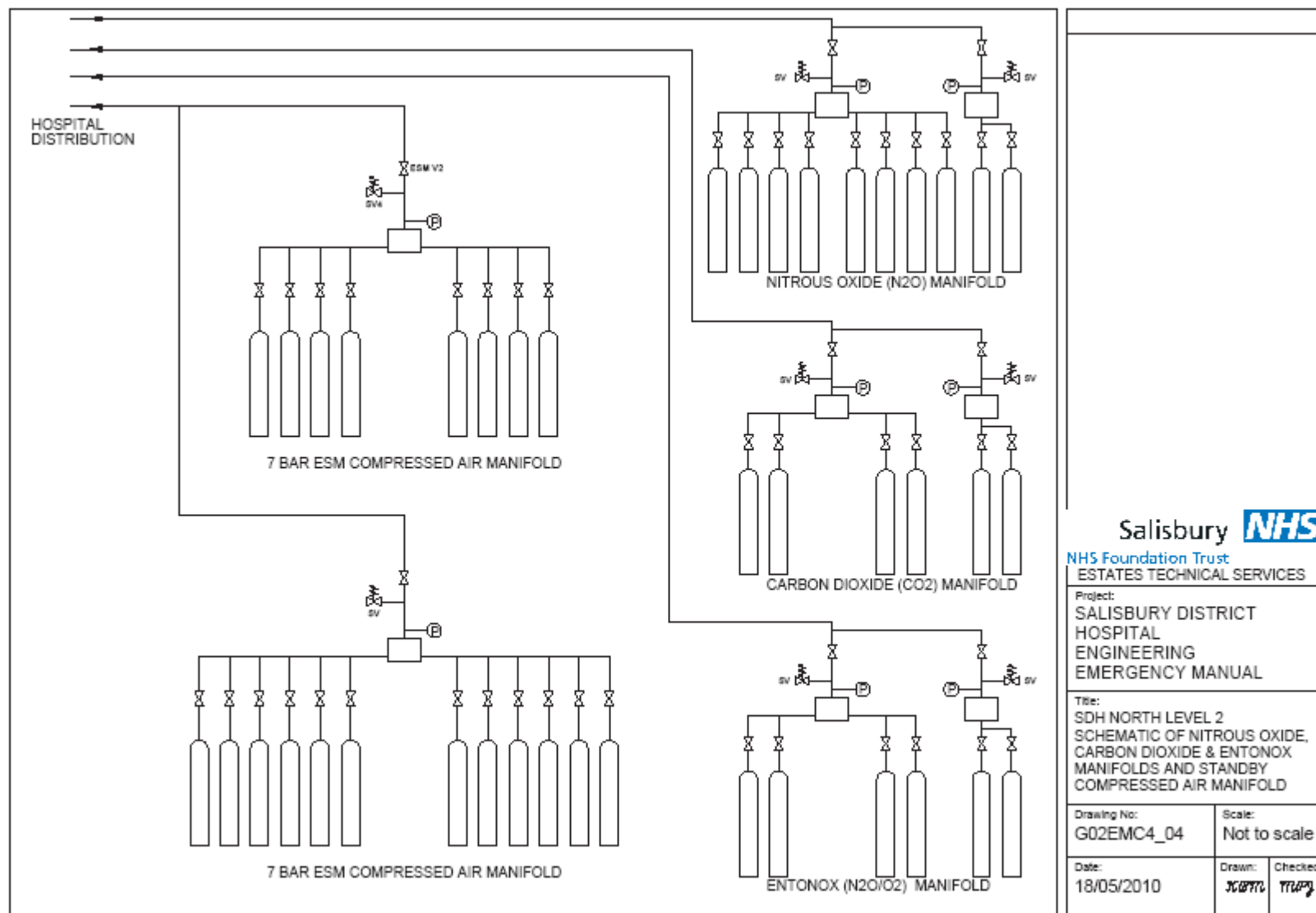


<p>Salisbury </p> <p>NHS Foundation Trust</p> <p>ESTATES TECHNICAL SERVICES</p>		
<p>Project:</p> <p>SALISBURY DISTRICT HOSPITAL ENGINEERING EMERGENCY MANUAL</p>		
<p>Title:</p> <p>SDH NORTH LEVELS 1 & 2 SCHEMATIC OF OXYGEN PLANT (V.I.E.)</p>		
<p>Drawing No:</p> <p>G02EMC4_03</p>	<p>Scale:</p> <p>Not to scale</p>	
<p>Date:</p> <p>19/05/2010</p>	<p>Drawn:</p> <p>SCOTT</p>	<p>Checked:</p> <p>TRUPP</p>

C.8 SDH North schematic of oxygen intake pipe work in Level 2 Sector 14 manifold room



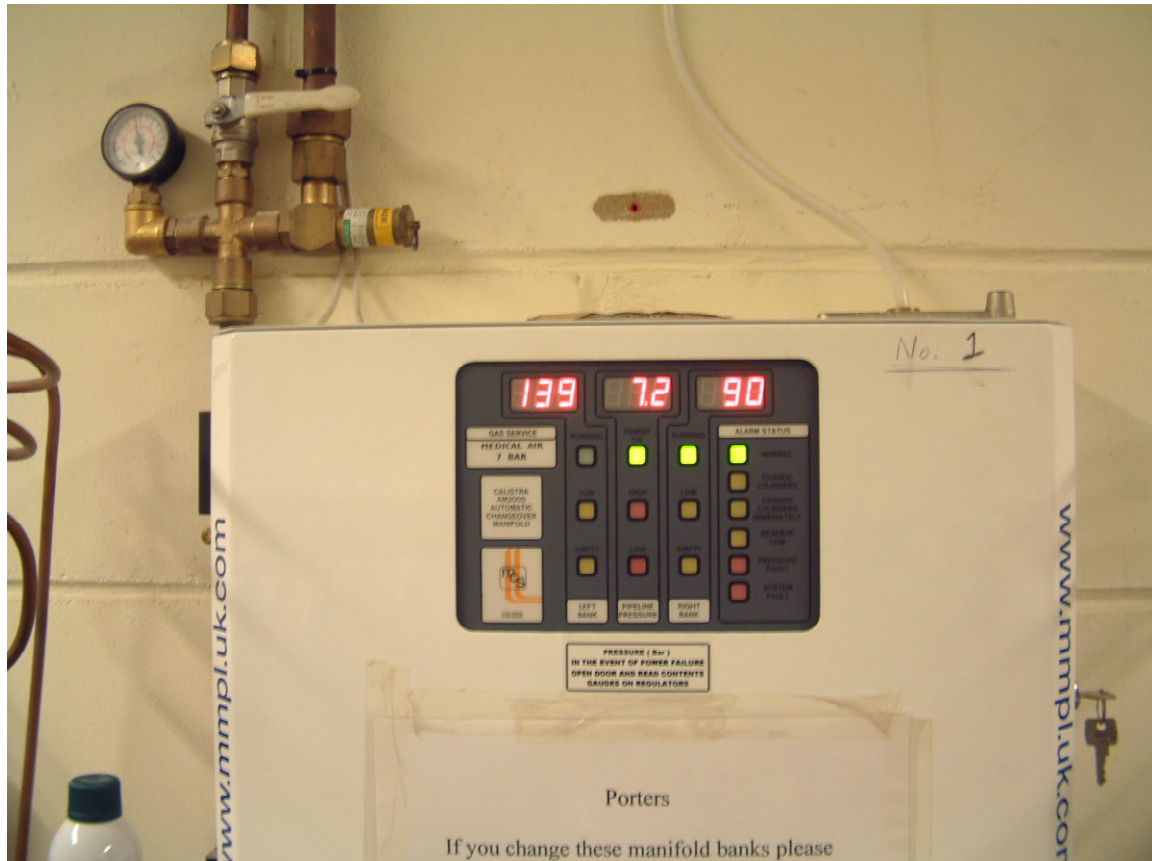
C.9 SDH North schematic of manifolds in Level 2 Sector 14 manifold room



SDH NORTH AIR MANIFOLD 1

**GAS
LOCATION**

**AIR
SDH NORTH**



Read left digital readout
Cylinder contents

Ignore middle gauge
(pipeline pressure)

Read right digital readout
Cylinder contents

When full,
digital readout reads
approx 140bar

When full,
digital readout reads
approx 140bar

If pressure drops to 120 bar please inform Estates Technical Services.

Change cylinders if pressure drops to 70bar.

SDH NORTH AIR MANIFOLD 2

**GAS
LOCATION**

**AIR
SDH NORTH**



Read left digital readout
Cylinder contents

Ignore middle gauge
(pipeline pressure)

Read right digital readout
Cylinder contents

When full,
digital readout reads
approx 140bar

When full,
digital readout reads
approx 140bar

If pressure drops to 120 bar please inform Estates Technical Services.

Change cylinders if pressure drops to 70bar.

SDH NORTH N2O MANIFOLD

**GAS
LOCATION**

**NITROUS OXIDE
LEVEL 2**



Left hand digital readout
Cylinder contents

Middle digital readout
(Pipeline pressure)

Right hand digital readout
Cylinder contents

When full,
digital readout reads
approx 50 bar

When full,
digital readout reads
approx 50 bar

There is no need to read these gauges on a regular basis, because they only show a drop in pressure (contents) when they are nearly empty. however they should be read when changing cylinders to ensure full cylinders have been fitted.

SDH NORTH N2O MANIFOLD

**GAS
LOCATION**

**NITROUS OXIDE
LEVEL 2**



Left hand digital readout
Cylinder contents

Middle digital readout
(Pipeline pressure)

Right hand digital readout
Cylinder contents

When full,
digital readout reads
approx 50 bar

When full,
digital readout reads
approx 50 bar

There is no need to read these gauges on a regular basis, because they only show a drop in pressure (contents) when they are nearly empty. however they should be read when changing cylinders to ensure full cylinders have been fitted.

SDH NORTH CO2 MANIFOLD

**GAS
LOCATION**

**CARBON DIOXIDE
LEVEL 2**



Left hand digital readout
Cylinder contents

Middle digital readout
(Pipeline pressure)

Right hand digital readout
Cylinder contents

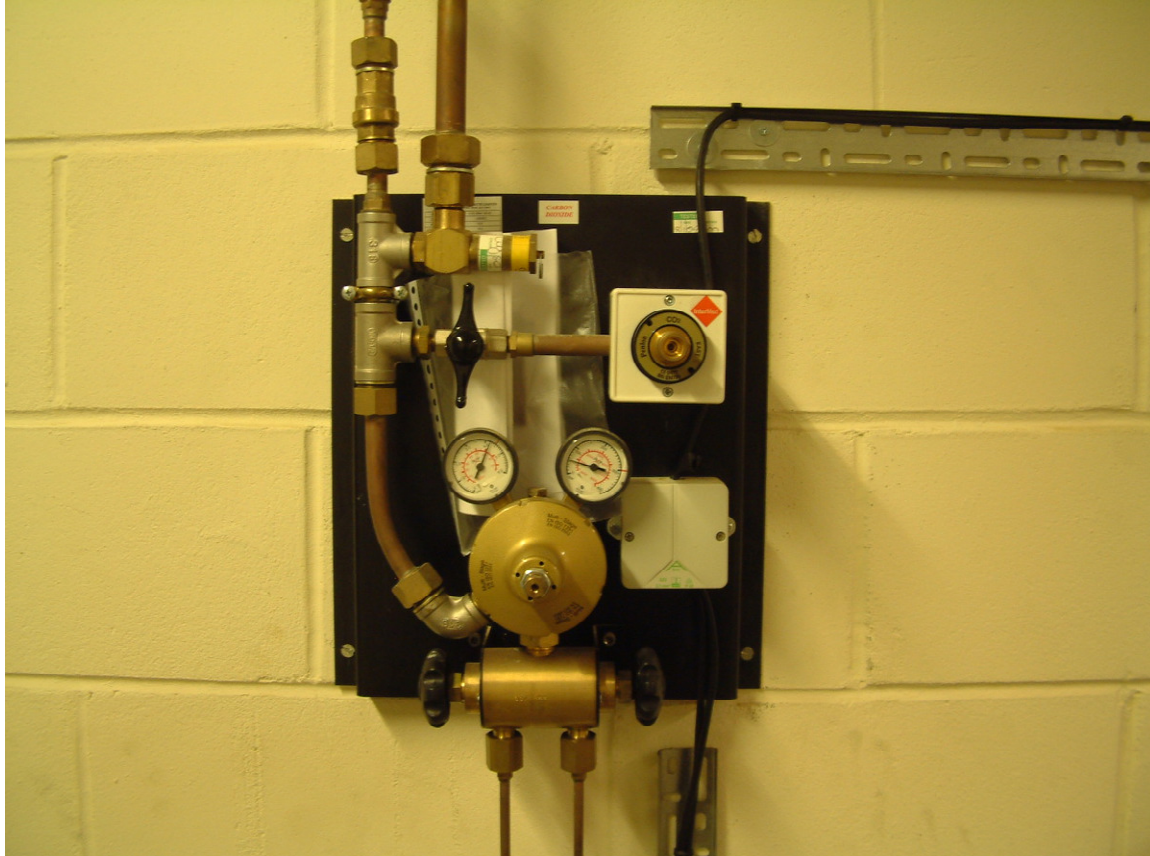
When full,
digital readout reads
approx 50 bar

When full,
digital readout reads
approx 50 bar

SDH NORTH CO2 ESM

**GAS
LOCATION**

**CARBON DIOXIDE
LEVEL 2**

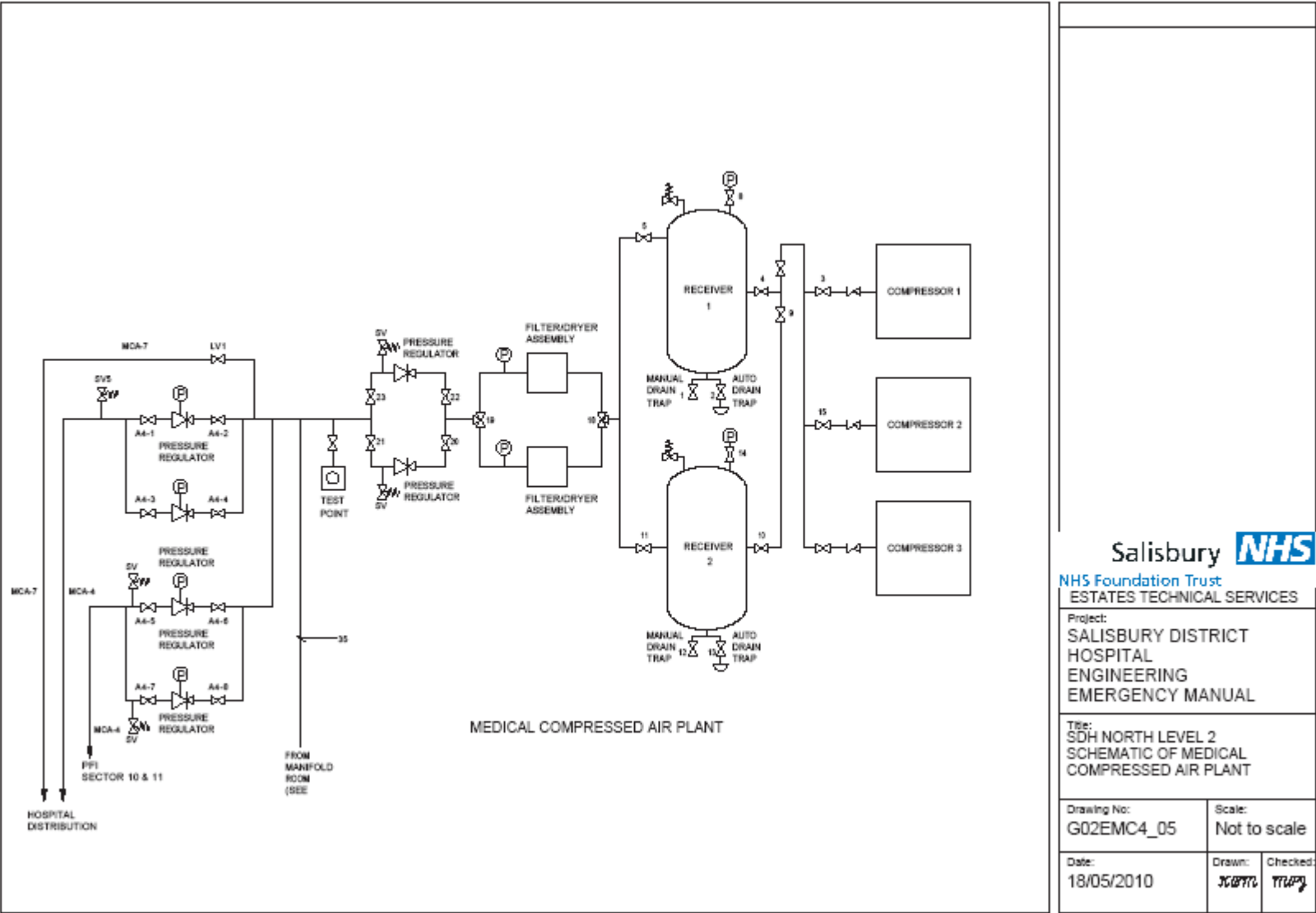


Ignore left hand gauge
(Pipeline pressure)

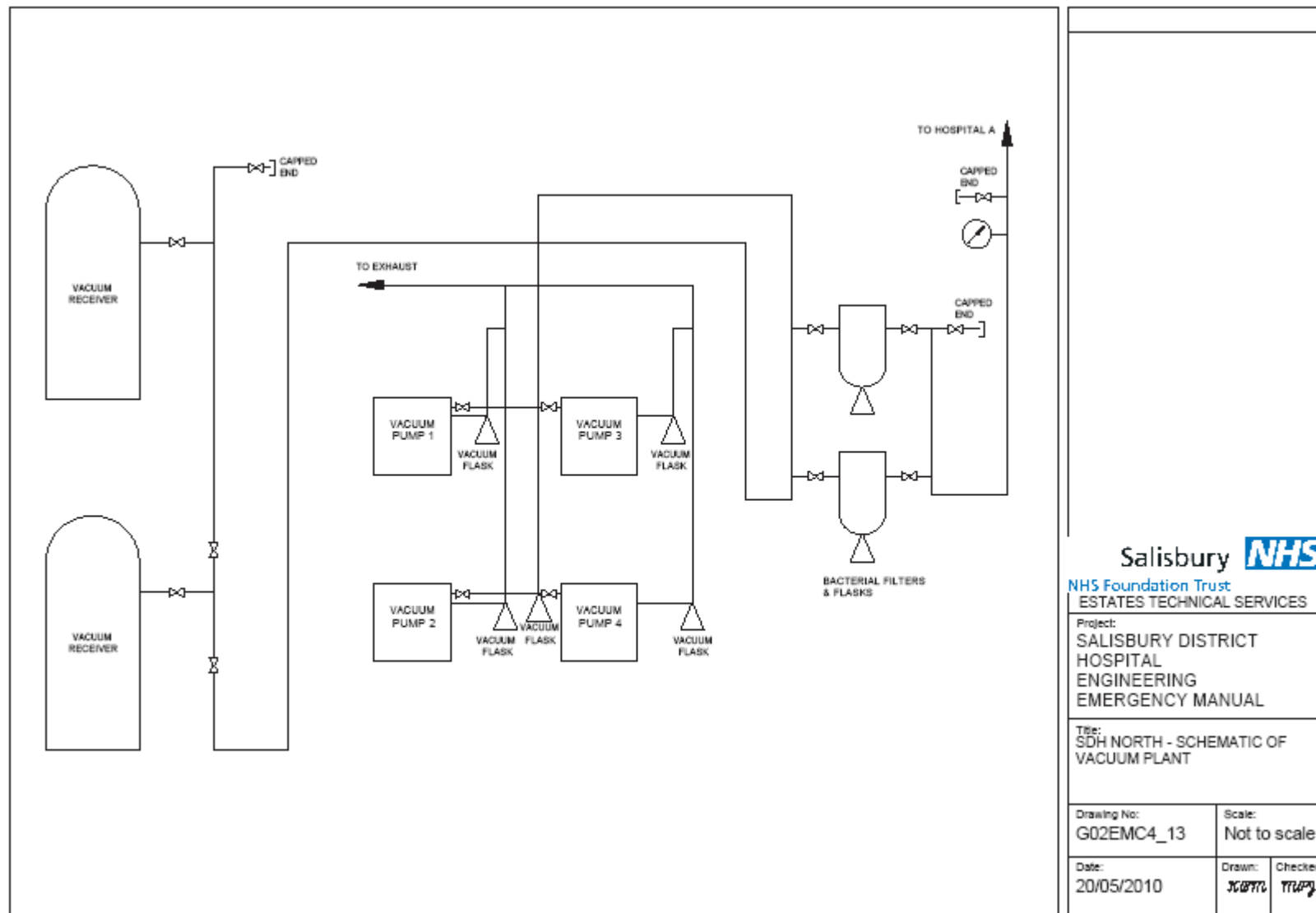
Right hand gauge
Cylinder contents

When full,
Gauge reads
Approx 50 bar

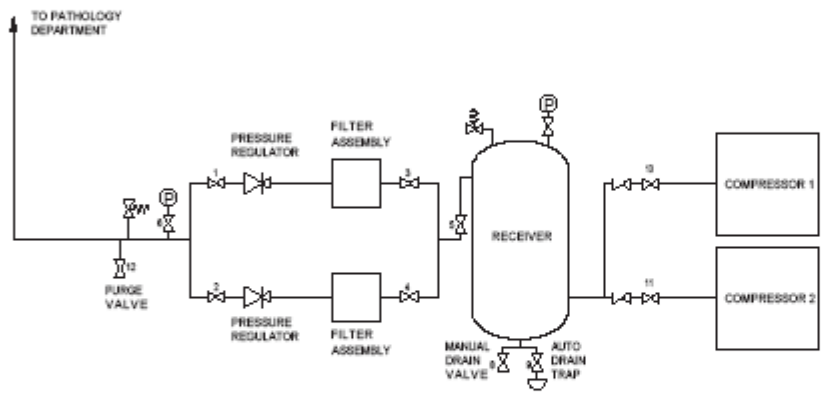
C.10 SDH North schematic of medical compressed air plant Level 2 Sector 14




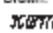
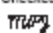
C.11 SDH North medical vacuum plant Level 2 Sector 14



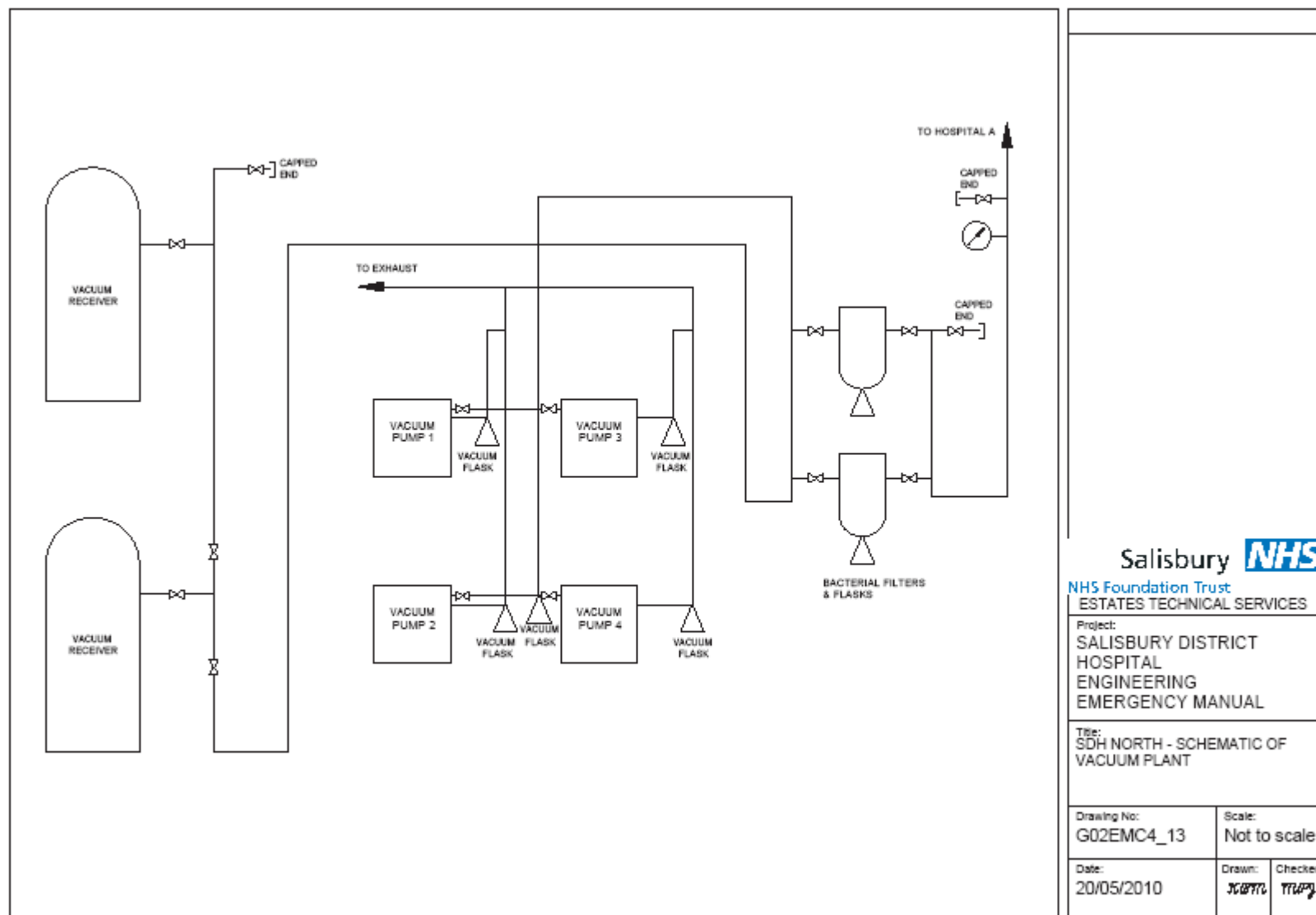
C.12 SDH North Pathology air plant Level 2 Sector 14



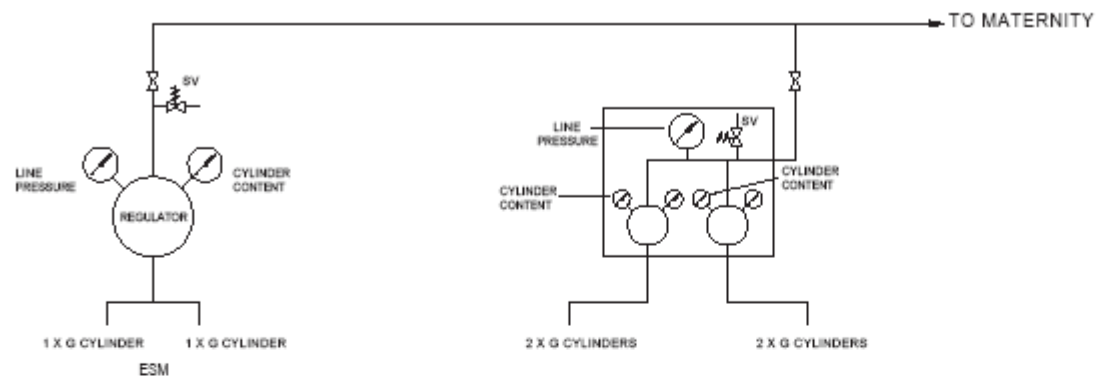
PATHOLOGY COMPRESSED AIR PLANT

Salisbury 		
NHS Foundation Trust		
ESTATES TECHNICAL SERVICES		
Project: SALISBURY DISTRICT HOSPITAL ENGINEERING EMERGENCY MANUAL		
Title: SDH NORTH LEVEL 2 SCHEMATIC OF PATHOLOGY COMPRESSED AIR PLANT		
Drawing No: G02EMC4_06	Scale: Not to scale	
Date: 19/05/2010	Drawn: 	Checked: 

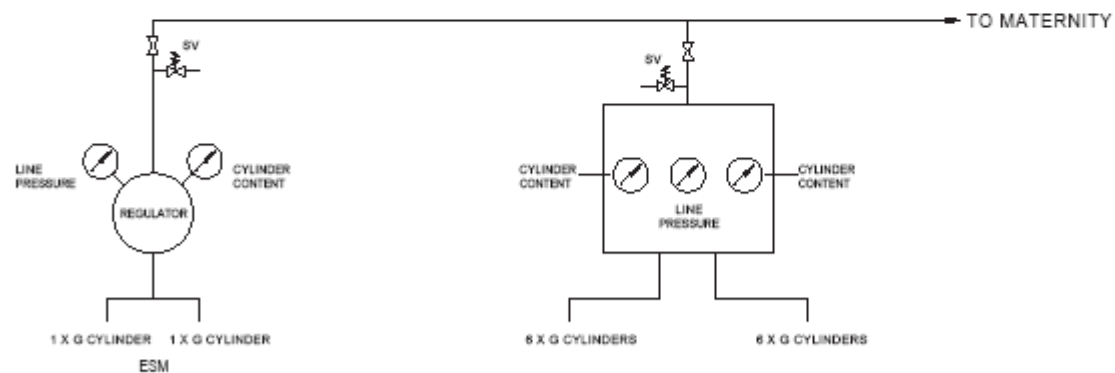
C.13 SDH North Pathology vacuum plant Level 2 Sector 14



C.14 SDH Central Maternity nitrous oxide and entonox manifolds



N_2O MANIFOLD & ESM



N_2O/O_2 MANIFOLD & ESM

Salisbury **NHS**

NHS Foundation Trust
ESTATES TECHNICAL SERVICES

Project:
SALISBURY DISTRICT
HOSPITAL
ENGINEERING
EMERGENCY MANUAL

Title:
SDH CENTRAL
MATERNITY NITROUS OXIDE &
ENTONOX MANIFOLDS

Drawing No:
G02EMC4_14

Scale:
Not to scale

Date:
26/05/2010

Drawn: *JCB/ML* Checked: *TTW/ML*

MATERNITY ENTONOX MANIFOLD

**GAS
LOCATION**

**ENTONOX
MATERNITY UNIT**



Read left hand gauge
Cylinder contents

Ignore middle gauge
(pipeline pressure)

Read right hand gauge
Cylinder contents

When full,
Gauge reads 137 bar

When full,
Gauge reads 137 bar

There is no need to read these gauges on a regular basis as they are in constant use. However they should be read when changing cylinders to ensure full cylinders have been fitted.

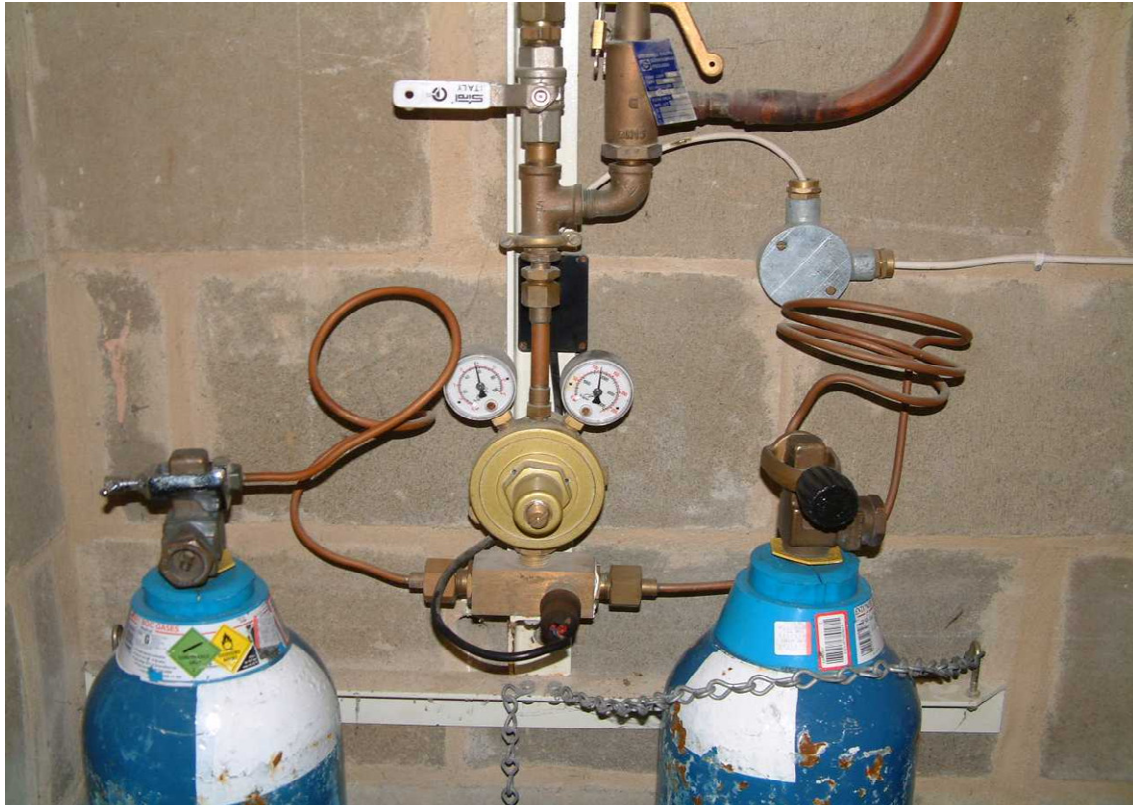
MATERNITY ENTONOX ESM

GAS

N20/O2

LOCATION

MATERNITY UNIT



Ignore left hand gauge
(pipeline pressure)

Read right hand gauge
Cylinder contents

When full,
Gauge reads 137 bar

If pressure drops to 120 bar please inform Estates Technical Services.

Change cylinders if pressure drops to 70bar.

MATERNITY NITROUS OXIDE MANIFOLD

**GAS
LOCATION**

**NITROUS OXIDE
MATERNITY UNIT**



Ignore middle top gauge

Ignore gauge one
(left hand gauge)
(Pipeline pressure)

Ignore gauge three
(right of middle gauge)
(Pipeline pressure)

Gauge two
(left of middle gauge)
Cylinder contents

Gauge four
(right hand gauge)
Cylinder contents

There is no need to read these gauges on a regular basis, because they only show a drop in pressure (contents) when they are nearly empty. however they should be read when changing cylinders to ensure full cylinders have been fitted.

MATERNITY N2O ESM

**GAS
LOCATION**

**NITROUS OXIDE
MATERNITY UNIT**



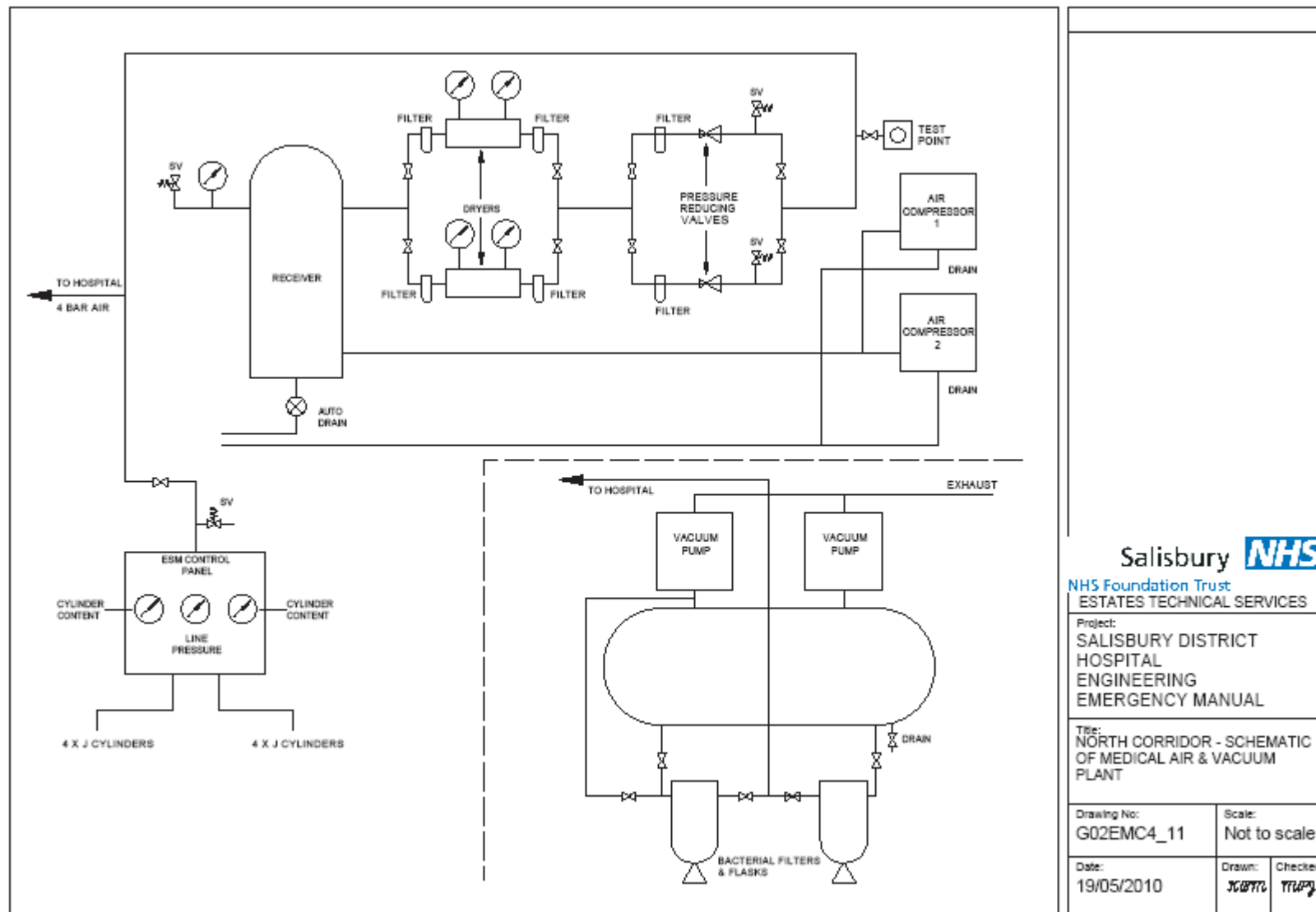
Ignore left hand gauge
(Pipeline pressure)

Right hand gauge
Cylinder contents

When full,
Gauge reads 46 bar

There is no need to read these gauges on a regular basis, because they only show a drop in pressure (contents) when they are nearly empty. however they should be read when changing cylinders to ensure full cylinders have been fitted.

C.15 SDH Central North Corridor medical air and vacuum plant



SDH CENTRAL ESM MANIFOLD

**GAS
LOCATION**

**AIR
NORTH CORRIDOR**



Read left hand gauge
Cylinder contents

Ignore middle gauge
(pipeline pressure)

Read right hand gauge
Cylinder contents

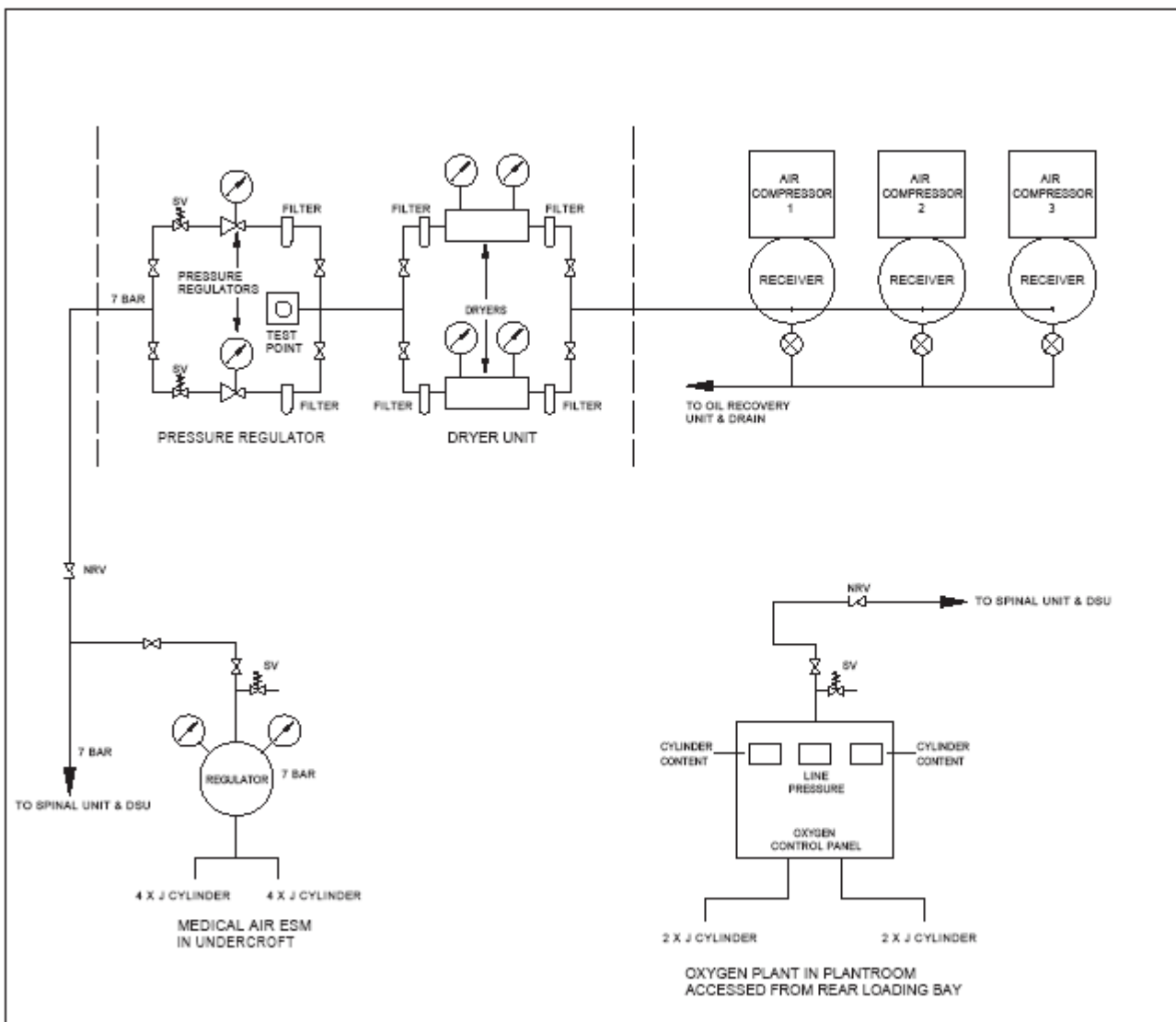
When full,
Gauge reads 137 bar

When full,
Gauge reads 137 bar

If pressure drops to 120 bar please inform Estates Technical Services.

Change cylinders if pressure drops to 70bar.

C.16 Spinal Unit medical air plant and manifold, and oxygen manifold supplying Spinal Unit and Day Surgery

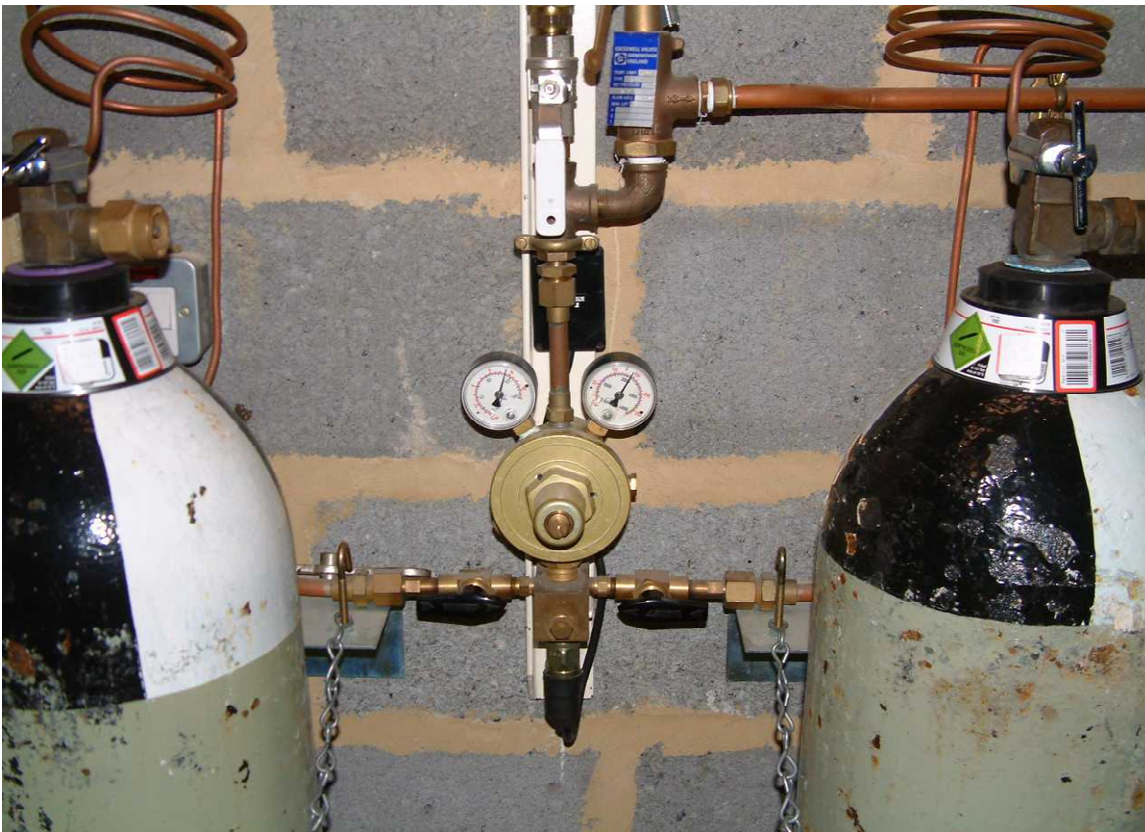


Salisbury
NHS Foundation Trust
ESTATES TECHNICAL
Project:
SALISBURY DISTRICT
HOSPITAL
ENGINEERING
EMERGENCY MAINTENANCE
Title:
SPINAL UNIT & DAY SURGERY
UNIT - SCHEMATIC
AIR & OXYGEN PLANT
Drawing No:
G02EMC4_09
Date:
19/05/2010

SPINAL UNIT ESM AIR MANIFOLD

**GAS
LOCATION**

**AIR
SPINAL UNIT**



Ignor left hand gauge
(pipeline pressure)

Read right hand gauge
Cylinder contents

When full,
Gauge reads 137 bar

If pressure drops to 120 bar please inform Estates Technical Services.

Change cylinders if pressure drops to 70bar.

SPINAL UNIT OXYGEN **MANIFOLD**

**GAS
LOCATION**

**OXYGEN
SPINAL UNIT**



Read left hand gauge
Cylinder contents

Ignore middle gauge
(pipeline pressure)

Read right hand gauge
Cylinder contents

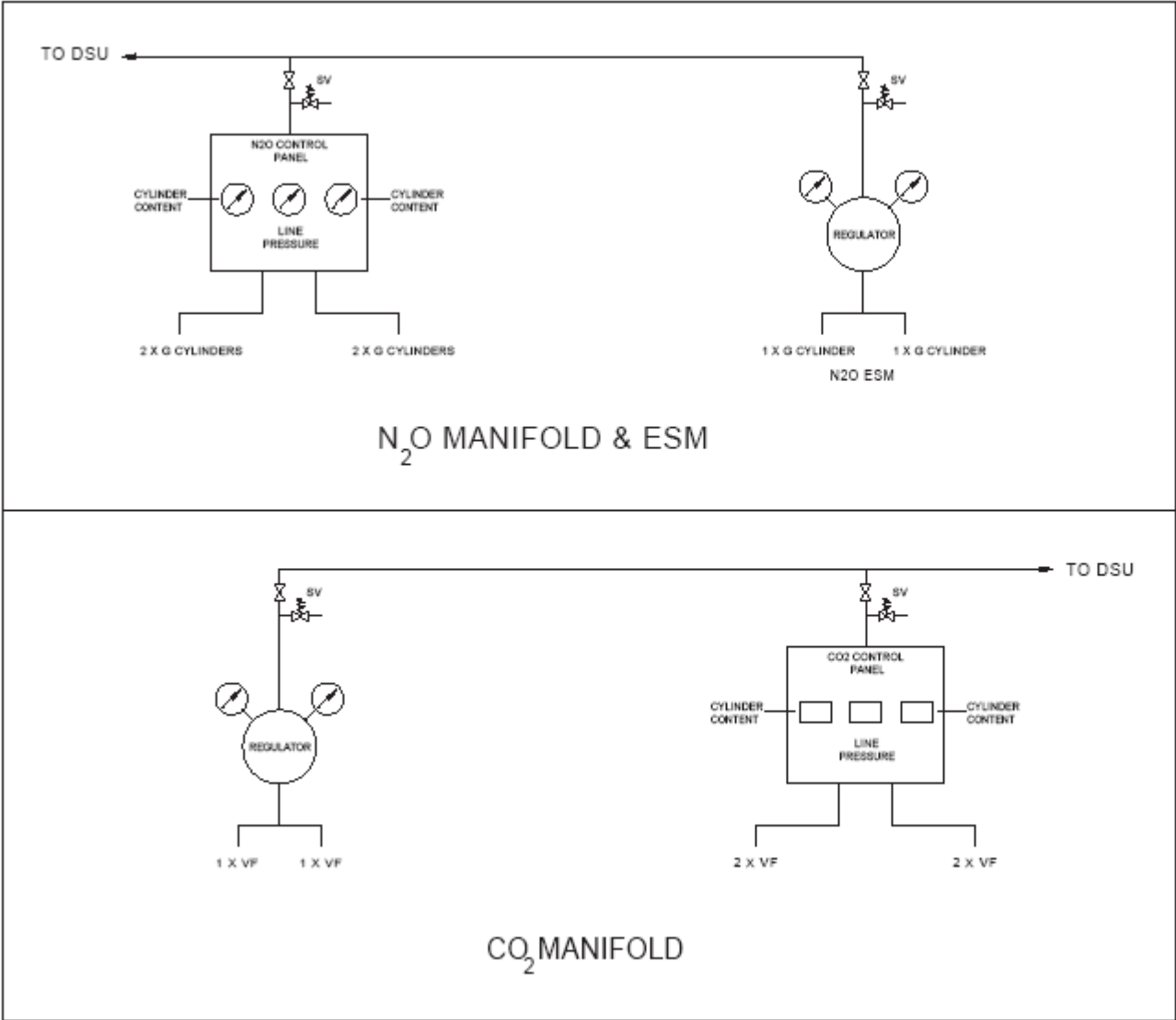
When full,
Gauge reads 137 bar

When full,
Gauge reads 137 bar

If pressure drops to 120 bar please inform Estates Technical Services.

Change cylinders if pressure drops to 70bar.

C.17 Day Surgery Unit nitrous oxide and carbon dioxide manifolds



Salisbury
NHS Foundation Trust
ESTATES TECHNICAL
Project:
SALISBURY DISTRICT
HOSPITAL
ENGINEERING
EMERGENCY M
Title:
MANIFOLD ROOM
WORKSHOP - SCH
NITROUS OXIDE &
DIOXIDE MANIFOLD
Drawing No:
G02EMC4_10
Date:
18/05/2010

DAY SURGERY N2O MANIFOLD

**GAS
LOCATION**

**NITROUS OXIDE
DAY SURGERY
UNIT**



Left digital readout
Cylinder contents

Middle gauge
(Pipeline pressure)

Right digital readout
Cylinder contents

When full,
digital readout
reads approx 50 bar

When full,
digital readout
reads approx 50 bar

There is no need to read these gauges on a regular basis, because they only show a drop in pressure (contents) when they are nearly empty. however they should be read when changing cylinders to ensure full cylinders have been fitted.

DAY SURGERY UNIT N2O ESM

**GAS
LOCATION**

**NITROUS OXIDE
DAY SURGERY
UNIT**



Ignore left hand gauge
(Pipeline pressure)

Right hand gauge
Cylinder contents

When full,
Gauge reads 46 bar

There is no need to read these gauges on a regular basis, because they only show a drop in pressure (contents) when they are nearly empty. however they should be read when changing cylinders to ensure full cylinders have been fitted.

DAY SURGERY CO2 MANIFOLD

**GAS
LOCATION**

**CARBON DIOXIDE
DAY SURGERY
UNIT**



Left digital readout
Cylinder contents

Middle gauge
(Pipeline pressure)

Right digital readout
Cylinder contents

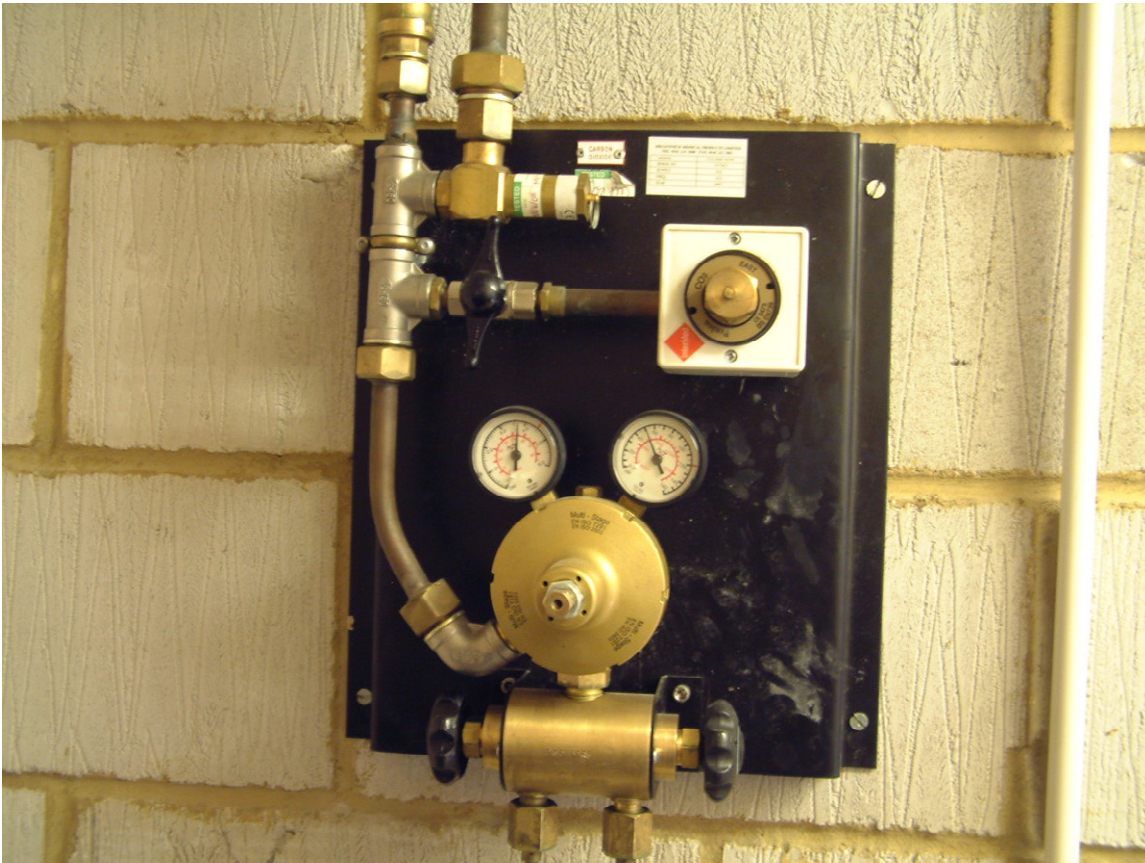
When full,
digital readout
reads approx 50 bar

When full,
digital readout
reads approx 50 bar

DAY SURGERY UNIT CO2 MANIFOLD

**GAS
LOCATION**

**CO2
DAY SURGERY UNIT**



Ignor left hand gauge
(pipeline pressure)

Read right hand gauge
Cylinder contents

When full,
Gauge reads
Approx 50 bar

C.18 Day Surgery Unit and Spinal Unit vacuum plant