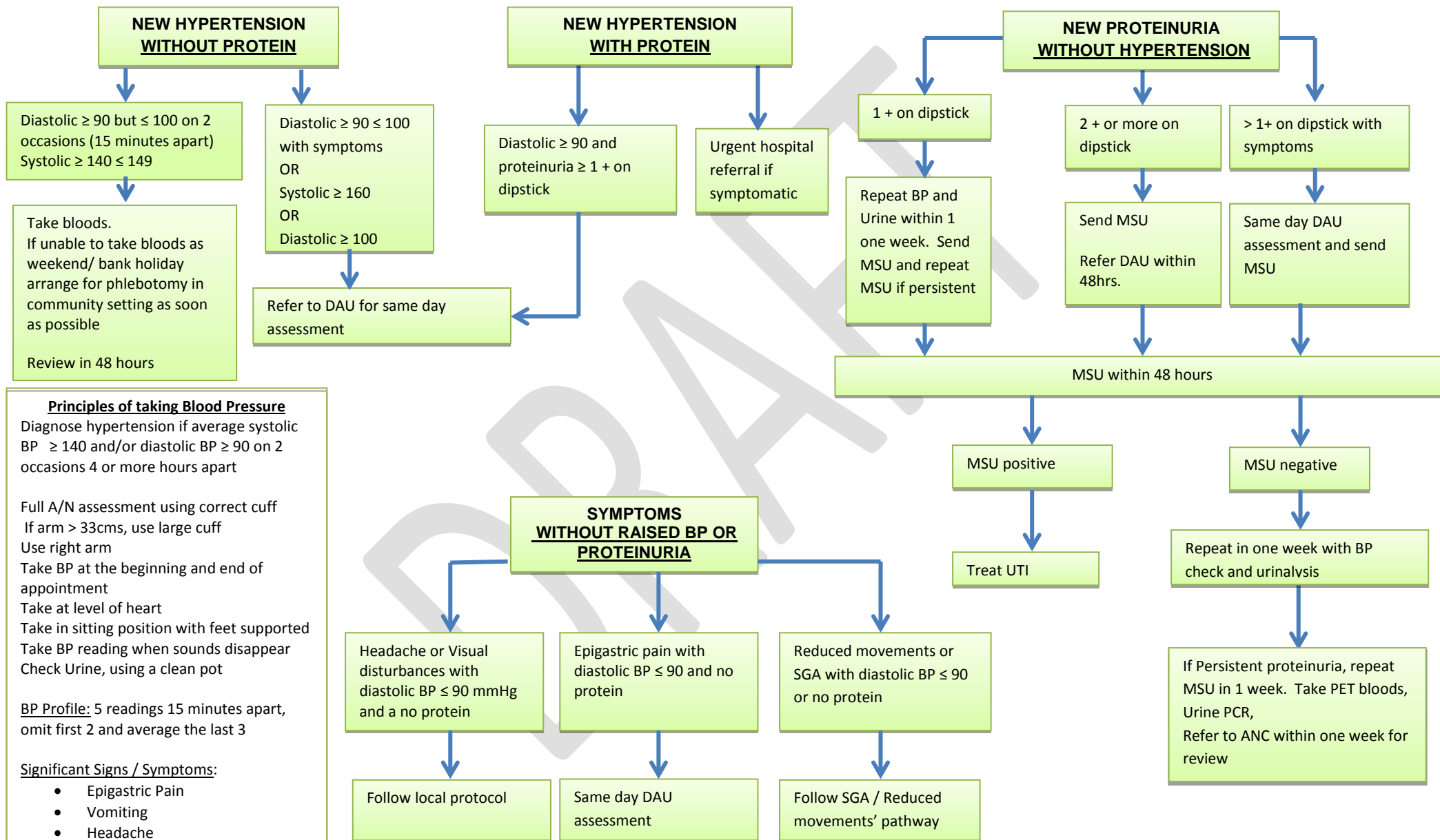




Wessex Ante Natal Care Pathways Reviewed 07.01.19 V3

No10 COMMUNITY CARE PATHWAY FOR HYPERTENSIVE DISORDERS IN PREGNANCY



Principles of taking Blood Pressure
 Diagnose hypertension if average systolic BP ≥ 140 and/or diastolic BP ≥ 90 on 2 occasions 4 or more hours apart

Full A/N assessment using correct cuff
 If arm > 33 cms, use large cuff
 Use right arm
 Take BP at the beginning and end of appointment
 Take at level of heart
 Take in sitting position with feet supported
 Take BP reading when sounds disappear
 Check Urine, using a clean pot

BP Profile: 5 readings 15 minutes apart, omit first 2 and average the last 3

Significant Signs / Symptoms:

- Epigastric Pain
- Vomiting
- Headache
- Visual Disturbances
- Reduced fetal movements
- Small for gestation age infant