

Place catheter according to protocol leaving a minimum of 3 cm of catheter external to the insertion site for SecurAcath to attach to.

As a general rule select SecurAcath device to match catheter diameter. If the catheter is labelled with a half French size, use the closest smallest size SecurAcath, e.g. 8.5F catheter use a 8F SecurAcath.

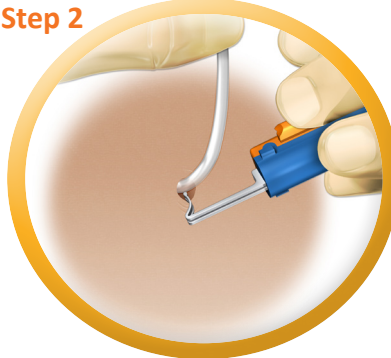
Reverse tapered and multiple lumen power lines may require different sizes. Contact your SecurAcath representative for more information.

Step 1



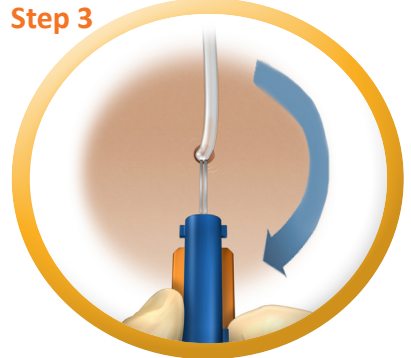
- A small dermatotomy on insertion of the catheter may ease SecurAcath application, alternatively use the dilator to stretch the opening
- Fold the base wings downwards until the tips of the feet come together
- Lift the catheter out of the way allowing clear access to the insertion site
- Apply light traction to the skin to dilate the insertion site.

Step 2



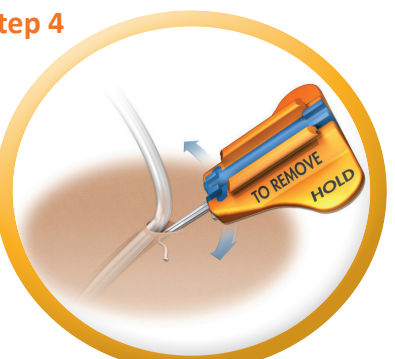
- Align folded base with the feet pointing in the same direction as the catheter
- The legs should be at the 2 'o'clock position
- Fully insert the feet underneath the catheter.

Step 3



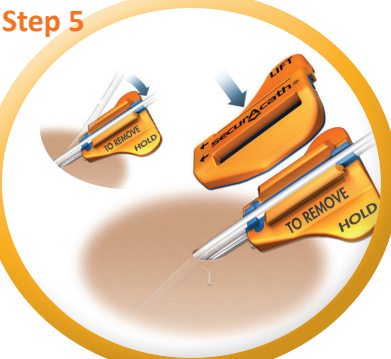
- Rotate the folded base to the 6 'o'clock position
- Advance the base a few mm
- The legs should sit directly underneath the catheter
- The feet must sit within the subcutaneous tissue
- To reposition, remove SecurAcath and repeat the process.

Step 4



- Release base wings outwards
- Gently twist SecurAcath and palpate the feet, ensure there is enough subcutaneous tissue between the feet and the dermis
- If the feet feel sharp or more depth is required remove the SecurAcath and repeat the process.

Step 5



- Ensure catheter and base are clean and dry
- Align catheter with the blue groove
- Support the base off the patients skin
- Apply the cover with firm pressure in the centre
- Check the catheter is centrally positioned in the blue groove, with no gaps between the cover and base
- The catheter is now secure. SecurAcath will stay in place for the life of the line.

Step 6



- Optional: the cover may be removed and replaced if catheter repositioning is required.
- The SecurAcath will lay flat on the skin
- Ensure the skin is clean and dry
- Dress the site as per hospital policy with a transparent film dressing
- Apply the dressing loosely ensuring the catheter hub is positioned under the dressing.