

GENERAL INFORMATION

- Administer the injection in different skin locations on the stomach (left and right of the navel) or the thigh.
- If there is severe pain during the injection, you have hit a skin nerve or blood vessel. In this case withdraw the syringe and reinject at another location.
- Injecting the medication can cause burning. This is not unusual and can be reduced by injecting more slowly.
- In very slim or very muscular patients, a flatter injection angle (45°) can be considered.

FOR SELF-MONITORING

- Please cross out the corresponding weekday after injecting.
- The injection should always be administered at the same time every day.

MON	TUES	WED	THURS	FRI	SAT	SUN
MON	TUES	WED	THURS	FRI	SAT	SUN
MON	TUES	WED	THURS	FRI	SAT	SUN
MON	TUES	WED	THURS	FRI	SAT	SUN
MON	TUES	WED	THURS	FRI	SAT	SUN

Your injection time

mornings: _____ am / evenings: _____ pm

Duration of the treatment, until _____

Your next doctor's appointment _____

A service of Pfizer AG



Doctor's stamp

SIMPLE USE

Dear patient,

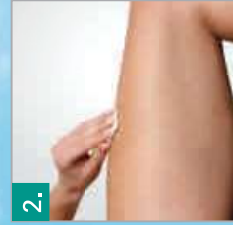
Your doctor has prescribed Fragmin®. This low molecular weight Heparin inhibits the clotting of blood and therefore reduces the risk of thrombosis formation.

The following guide depicts correct use.

Please observe the instructions given by your doctor carefully with regard to daily use and arranged duration of treatment. Read the product information leaflet; if you have questions, please contact your doctor or pharmacist.

GUIDE TO SELF-ADMINISTRATION

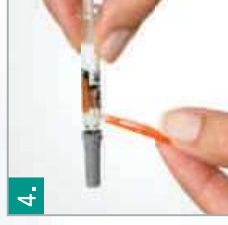
1. Fragmin® is injected subcutaneously (under the skin). The injection can be administered in either the wall of the abdomen or the front side of the thigh. Doctor's recommendation for injection site (optional):



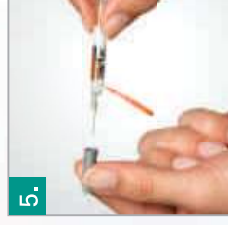
2. Disinfect the injection site with a sterile alcohol swab.



3. Remove the ready-to-use syringe from the sterile packaging, by peeling away the protective strip.



4. Pull back the red needle trap from the needle cap.



5. Pull off the protective rubber cap lengthways along the needle.

6. The air bubble in the syringe serves to completely empty the syringe and must **not** be removed. If a drop has formed on the tip of the needle, carefully shake it off, do not wipe.

