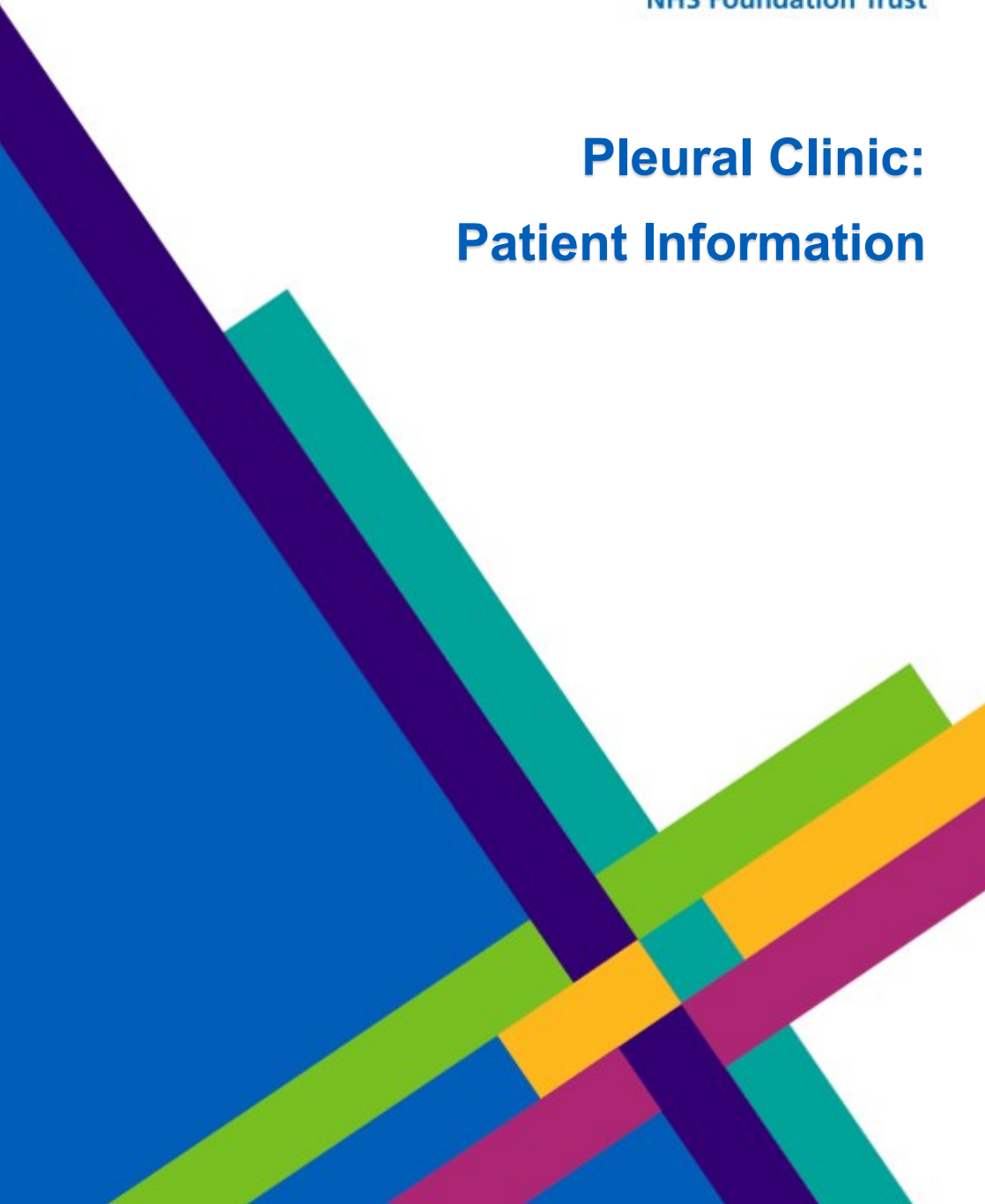


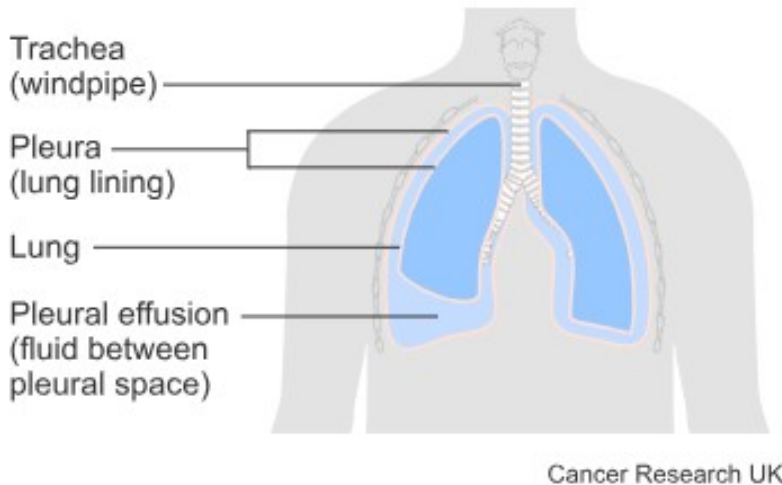


Salisbury
NHS Foundation Trust

Pleural Clinic: Patient Information



Your GP (or other doctor) will have referred you to pleural clinic because they suspect that you have some fluid in the space between your lung and the chest wall (pleural effusion). There are many causes for this and the appointment will be the first step in determining which is of relevance to you.



*(The above image is courtesy of © Cancer Research UK [2002] All rights reserved.
Information taken 17/11/23)*

Before attending pleural clinic

It is very important that we know if you are on any medications that thin the blood or suppress your immune system before you come to clinic as these may need to be temporarily withheld. If you are on blood thinners (anticoagulants) then there are risks associated with stopping them. Please make sure you understand these clearly when you are discussing your procedure with your doctor in clinic

A member of the team will contact you by telephone to let you know the date and time of the appointment and also to review your

medications. Medications it is particularly important to know about:

- Warfarin
- Clopidogrel
- Rivaroxaban
- Apixaban
- Edoxaban
- Dabigatran

This is a clinic for patients who are mobile, this means that during the clinic appointment you will need to move from the chair to a couch and back again. If you have significant mobility problems and think you would find it difficult to do this without help then please let us know by telephone. We may need to make a longer appointment or make other arrangements to have extra help available.

You will also need to have some blood tests before hand which may be arranged by your GP or by the hospital.

